

# Aluminium Power Supply Columns

GAS 100, GAS 160



## Aluminium column GAS 100

The "small" energy column can contain all standard switch and socket systems. The different possibilities of drill holes and drilling templates offer high flexibility for the application of single or multiple socket and switch frames. For water cleaned ceramic or tile floors we offer the version IP 54.

The pleasant design is appreciated mainly in offices. Moreover, data and telephone systems can be integrated.

### Pleasant and functional design

Mere functionality is not the most important asset today – the design of electro technical equipment is appreciated more and more, especially in office buildings, work shops and production plants, e.g. in automobile industry or engineering plants. High impact resistance, low weight and high flexibility in usage are further assets.

**High grade Aluminium = weather- and impact resistant and corrosion proof**



Powder coating in all available RAL colours on request.

### Protection categories

- for outdoor use: IP 54 (with corresponding fittings)
- for indoor use: IP 20



## Aluminium column GAS 160

The GAS 160 is a multifunctional and particularly solid construction. Fittings can be installed on all four sides of the column, e.g. 230 V or 400 V CEE-sockets in connection with switches and socket combinations, fuses and control units. A top guiding light is also available.

The GAS 160 is the ideal solution for production plants and work-shops. Of special interest is the possibility to connect compressed air, **low voltage supply systems as well as data processing modules, controlling and signal devices and CEE-add-on sockets up to 32A etc.**

### Application

- gateways, garden and park areas
- banks and office buildings
- medical practices (surgeries)
- administration buildings
- entrance halls and foyers
- residential areas, conservatories
- industrial plants
- swimming pools
- railway stations, airports, etc.

Detailed information upon request or on our home page: [www.gifas.at](http://www.gifas.at)

# Aluminium power supply column GAS 100



The „little“ power supply column is mainly used for assembly of all regular used switch and socket programs. The program assists variant boreholes for technical applications.

## **System description - Aluminium power supply column GAS 100**

The aluminium power supply column GAS 100 is designed for both indoor and outdoor applications.

## **Technical data - Energy column GAS 100**

Below you are getting some additional information regarding dimensions and technical details

## **Assembly samples - Energy column GAS 100**

You are invited to plan together with our engineers your individual application (height 200 up to 6000) with your individual technical assembly.

# System description - Aluminium power supply column GAS 100

The aluminium power supply column GAS 100 is designed for both indoor and outdoor applications.



- For ceramic, tiled floors, which are cleaned either wet or dry with protection class: IP
- Ceiling connections (up to a height of 6 m) can be drilled and assembled individually
- The sophisticated design is frequently used in modern offices to support power to each working place in combination with data and Telephone connections.
- In production and assembly halls this energy supplying column is the ideal solution for power supplying. Especially through to the possibility of combination for low voltage and data cable for controlling and information
- Customized powder coated in all possible RAL colours



- At outdoor areas the aluminium is free of corrosion and got an extremely high resistance and therewith the best premises.

## Scope of delivery

- Aluminium power supply column
- Ground assembly flange
- Fittings and screws for standard program
- Assembly screws for ground flange together with brass dowels

# Technical data - Energy column GAS 100

Below you are getting some additional information regarding dimensions and technical details



<-- fastening device consists of:

- Aluminium plate
- Threaded bolt
- Screw nuts and underlay disc

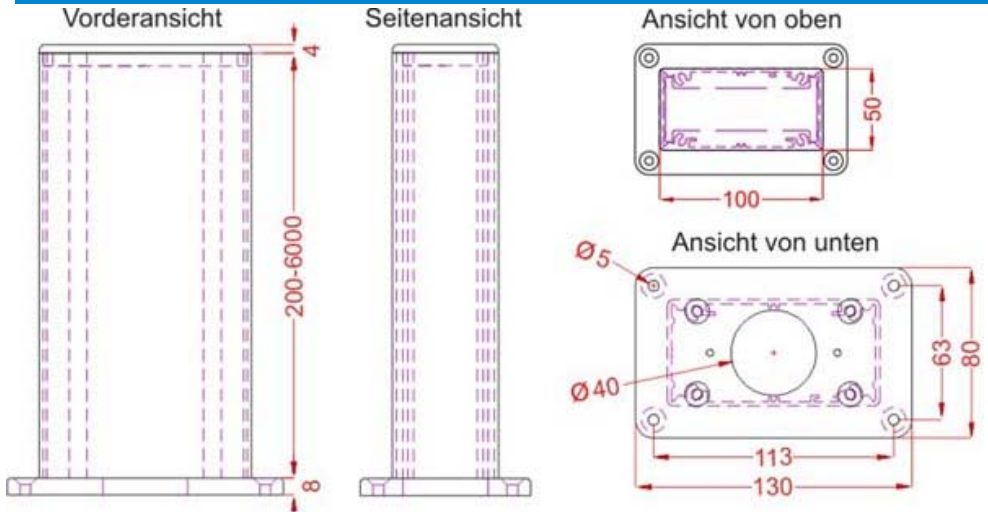
Aluminium-cover

Sleeve for double ceilings or double floors

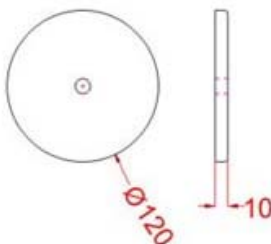


Material:	aluminium silver anodised fitting material of V2A stainless steel
Protection class:	IP 20 = non protection against humidity IP 54 = splashed water protection (with suitable assembly)
Dimensions:	100 x 50 mm closed aluminium profile length regarding customer requirements (from 0,2 m up to 6 m)
Assembly:	For single side assembly of al trade able standard switch and socket programs
Colour:	Individually on all available RAL colours
Ground mounting flange including:	4 stainless steel fitting screws (M5) with brass dowels
	Clamping device with tension spring technique

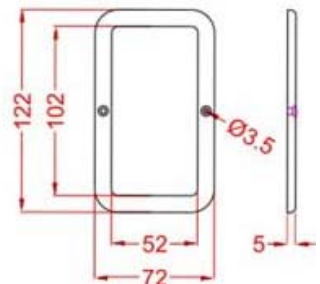
## Dimensions



## Spannvorrichtung

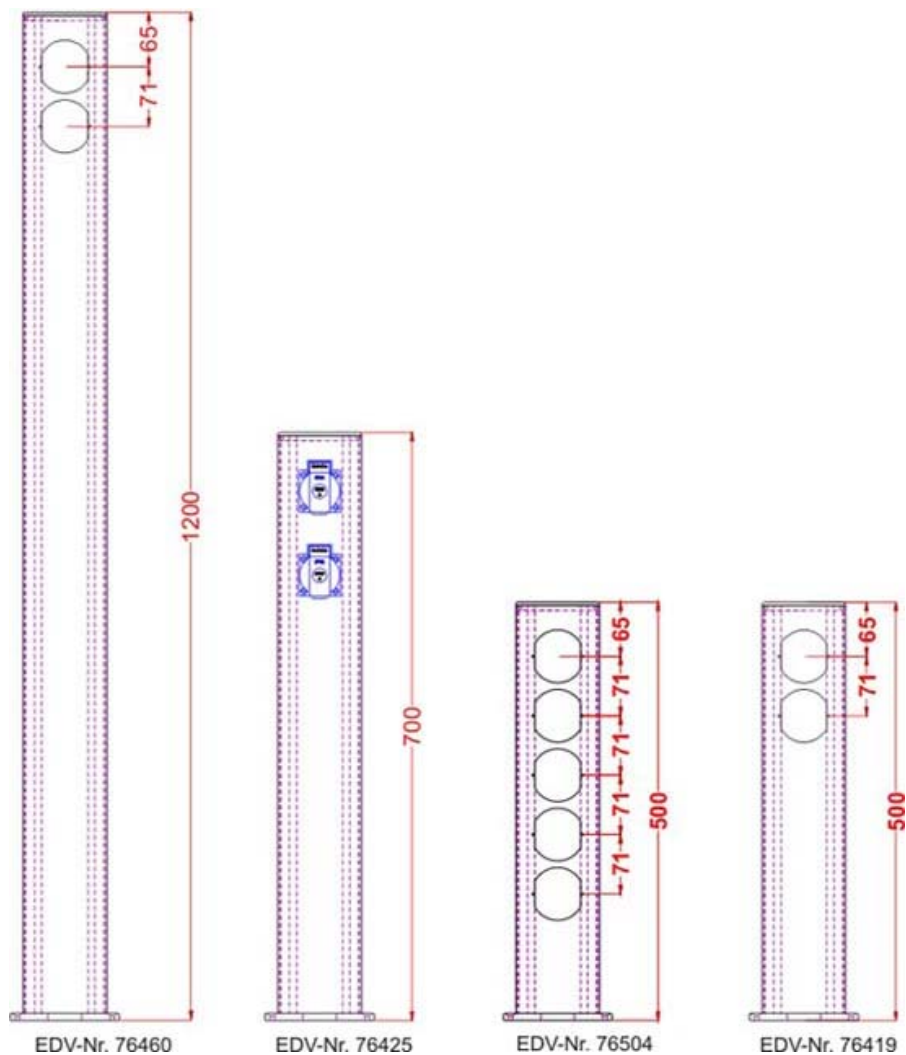


## Manschette



# Assembly samples - Energy column GAS 100

You are invited to plan together with our engineers your individual application (height 200 up to 6000) with your individual technical assembly.



## Application samples



# Aluminium power supply column GAS 160



The power supply column GAS 160 multifunctional aluminium column with a very robust design. This column can be assembled with technical applications at all sides

## **System description - Aluminium power supply column GAS 160**

The power column GAS 160 for best usage at indoor (protection class IP 20) and outdoor (protection class IP 54) applications

## **Technical data - Energy column GAS 160**

Below you are getting some additional information regarding dimensions and technical details.

## **Assembly sample Power column GAS 160**


You are invited to plan together with our engineers your individual application (height 200 up to 6000) with your individual technical assembly.

## System description - Aluminium power supply column GAS 160

The power column GAS 160 for best usage at indoor (protection class IP 20) and outdoor (protection class IP 54) applications



- Ceiling connections (up to a height of 6 m) can be drilled and assembled individually.
- A special application is the ceiling connectivity variation with closed aluminium profile for vertical application. This system assist power supply either from the ceiling or the floor
- For insulating of different power circuits there is a isolating plate integrated.
- In production and assembly halls this aluminium power supply column is the ideal solution. Due to the divers connectivity like pneumatic, integration of al trade able electrical socket and switch combinations, data and controlling and signal devises up to 32 A.
- The sophisticated design is frequently used in modern offices. Data and phone connections are available.

- Customized at al possible RAL colour available. 
- At outdoor areas the aluminium is free of corrosion and got an extremely high resistance and therewith the best premises.

### Scope of delivery

- Aluminium power supply column
- Ground assembly flange
- clamping devices up to 16 mm<sup>2</sup>
- Fittings and screws for standard program
- Assembly screws for ground flange together with brass dowels.
- Also possible to assemble electrical devices (CEE sockets, wiring and fusing) by the vendor)

# Technical data - Energy column GAS 160

Below you are getting some additional information regarding dimensions and technical details.



<-- fastening device consists of:

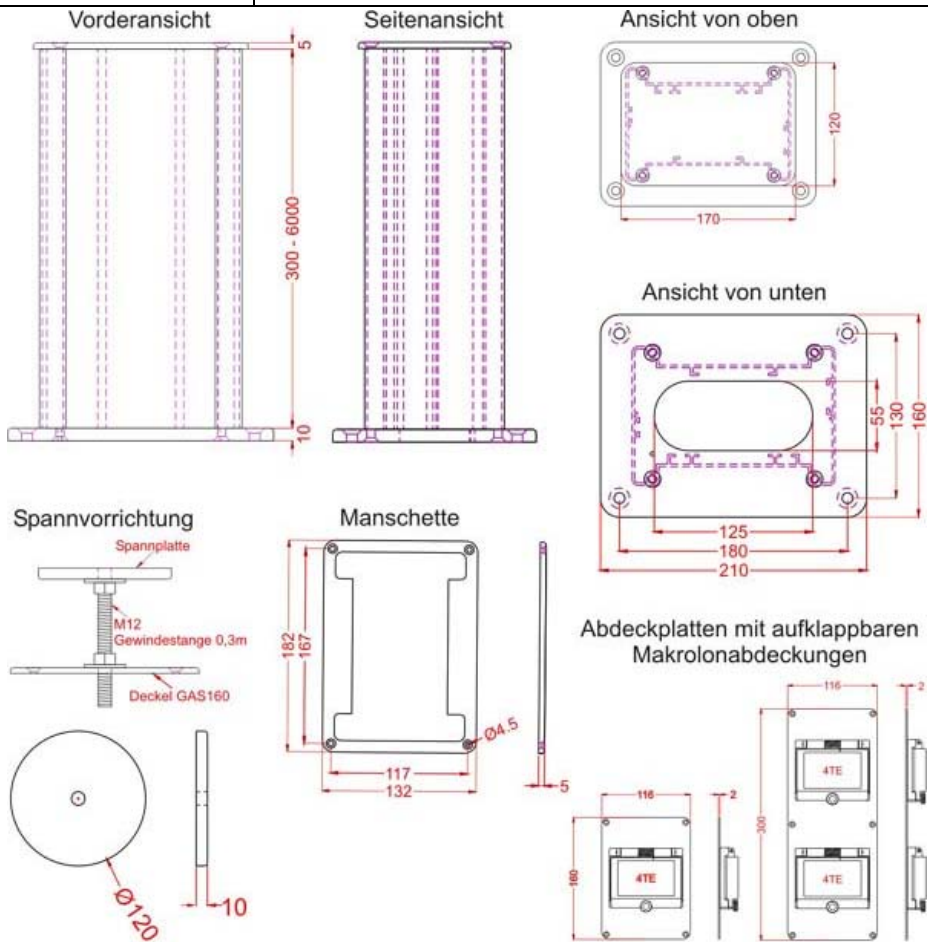
- aluminium plate
- threaded bolt M12
- screw nuts and underlay disc

Aluminium-cover

Sleeve for double ceilings or double floors



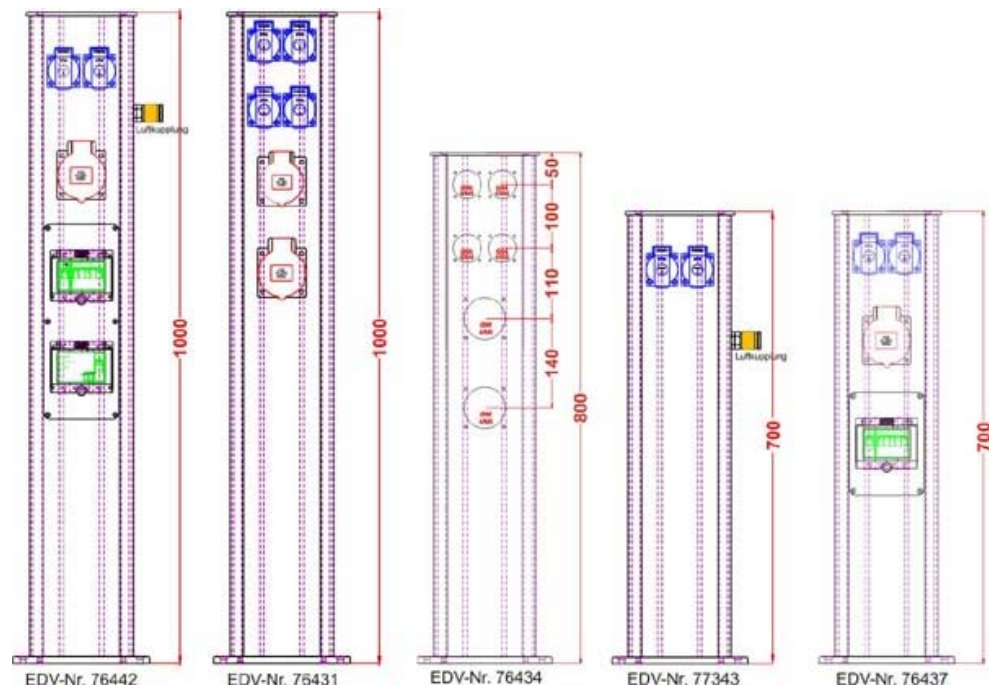
Material:	Aluminium silver anodised fitting material of V2A stainless steel
Protection class:	IP 20 = non protection against humidity IP 54 = splashed water protection (with suitable assembly)
Dimensions:	160 x 110 mm closed aluminium profile length regarding customer requirements (von 0,3 m up to 6 m)
Assembly:	possible on all sides regarding underlying requirements <ul style="list-style-type: none"> <li>• For all side assembly with al available electrical switch and socket programs</li> <li>• For all side CEE socket assembly</li> <li>• Fuse: line protection switch and residual current operated device</li> <li>• Pneumatic connectivity ¼`` up to two single hand pneumatic connections</li> <li>• Light can be mounted at the top</li> </ul>
Colour:	regarding underlying requirements either powder coated or in every RAL colour available.
Ground mounting flange including:	4 stainless steel fitting screws (M5) with brass dowels
	clamping device with tension spring technique up to 16 mm <sup>2</sup>





# Assembly sample Power column GAS 160

You are invited to plan together with our engineers your individual application (height 200 up to 6000) with your individual technical assembly.



## Applications

