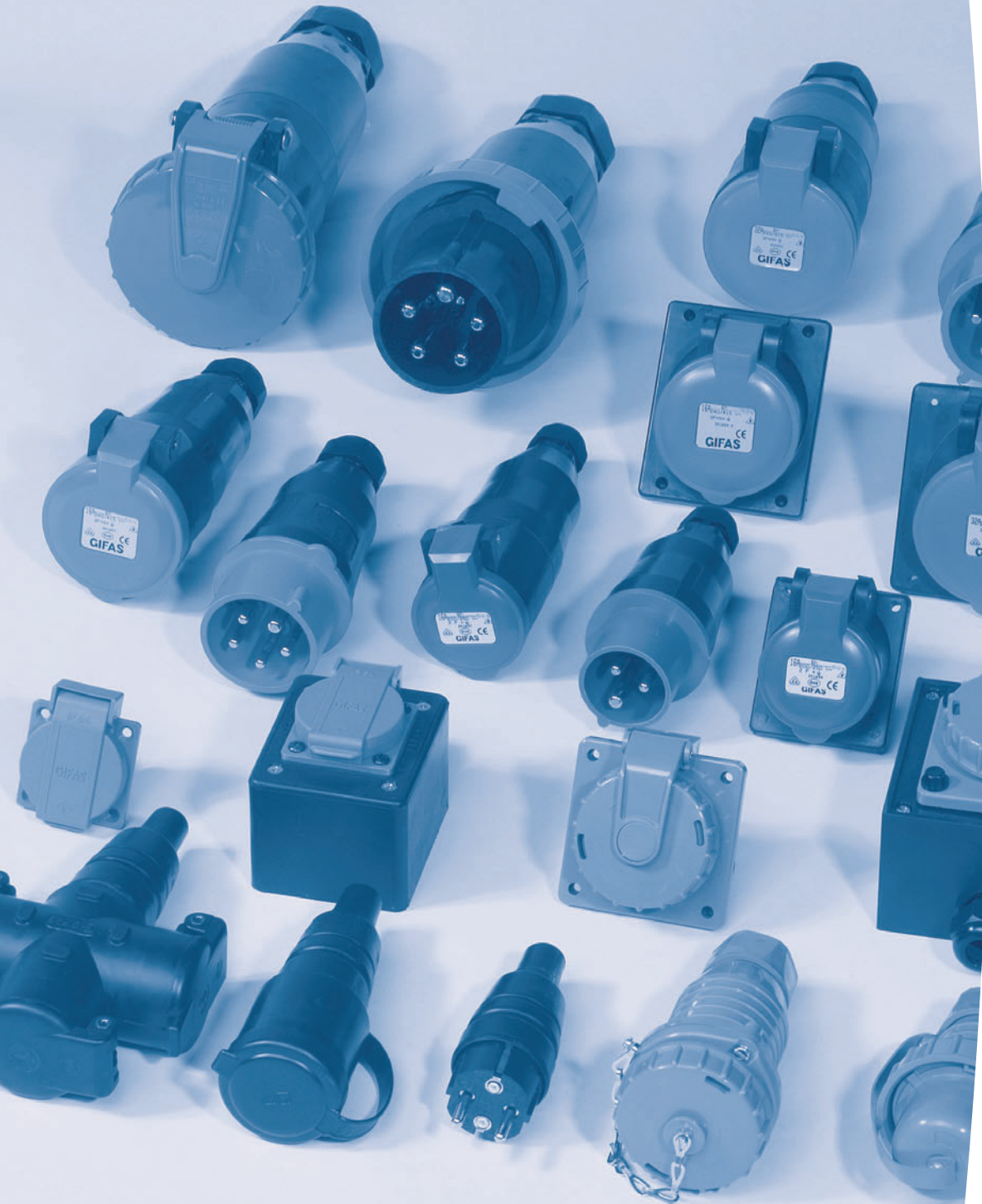


## Pin and socket connectors

- All-rubber connectors with earthing contact („Schuko“)
- All-rubber connectors with earthing contact water proof („Schuko-WD“)
- All-rubber CEE connectors
- All-rubber reducers



## Pin and socket connectors

All-rubber earthing schuko connectors with nickel-plated contacts

**„Schuko, FI, LS“**  
Explanations see page 1/0



	Ampere	Volt	EDP-No.	Product-ID-No.
All-rubber „Schuko“ plug with nickel-plated contacts <b>Industrial design</b> For cables up to 3G2,5	16A	230V	10735	111



	Ampere	Volt	EDP-No.	Product-ID-No.
All-rubber „Schuko“ coupling with nickel-plated contacts <b>Industrial design</b> For cables up to 3G2,5	16A	230V	10930	211



	Ampere	Volt	EDP-No.	Product-ID-No.
All-rubber „Schuko“ triple socket with nickel-plated contacts <b>Industrial design</b> For cables up to 3G2,5	16A	230V	11288	313



	Ampere	Volt	EDP-No.	Product-ID-No.
Built-in „Schuko“ socket made of break-proof thermoplast with nickel-plated contacts with spring cover with additional seal On request: IP55	16A	230V	11212	309



	Ampere	Volt	EDP-No.	Product-ID-No.
Wall „Schuko“ socket with nickel-plated contacts, blue all-rubber box With cable bushing IP54	16A	230V	13799	308



	Ampere	Volt	EDP-No.	Product-ID-No.
Wall „Schuko“ socket with nickel-plated contacts, black all-rubber box 1/cable gland M20. Large space for connecting, easy to change to CEE 16A 2P+E 230V. IP 54	16A	230V	25077	21309.PA

## Pin and socket connectors

Connectors with earthing contact - watertight  
 with nickel-plated contacts



„Schuko“ plug  
 with nickel-plated contacts  
 watertight IP68.

Ampere	Volt	EDP-No.	Product-ID-No.
--------	------	---------	----------------

16A	230V	48037	111.BLAU.IP68
-----	------	-------	---------------



„Schuko“ coupling  
 with nickel-plated contacts  
 watertight with cover IP68.

Ampere	Volt	EDP-No.	Product-ID-No.
--------	------	---------	----------------

16A	230V	48317	211.BLAU.IP68
-----	------	-------	---------------



Built-in Schuko-socket  
 with nickel-plated contacts  
 watertight with cover IP68.

Ampere	Volt	EDP-No.	Product-ID-No.
--------	------	---------	----------------

16A	230V	43156	309.BLAU.IP68
-----	------	-------	---------------



All-rubber wall „Schuko“ socket  
 watertight, with nickel-plated contacts  
 black all-rubber-box 1/cable gland M20.  
 Large space for connecting

Ampere	Volt	EDP-No.	Product-ID-No.
--------	------	---------	----------------

16A	230V	70682	1010.309.IP68.1M20
-----	------	-------	--------------------



All-rubber wall „Schuko“ triple socket  
 with nickel-plated contacts  
 watertight

Ampere	Volt	EDP-No.	Product-ID-No.
--------	------	---------	----------------

16A	230V	72396	1616.3X309.BLAU.IP68.3EKL.1M20
-----	------	-------	--------------------------------

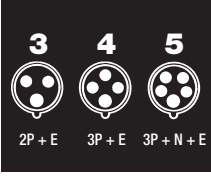






# Pin and socket connectors

All-rubber CEE plugs and phase inverters with nickel-plated contacts  
Cable feeding via cable gland

 <p>3 4 5 2P + E 3P + E 3P + N + E</p>			Ampere	Number of poles	 <p>230V 50 u. 60 Hz</p> <p>3pol. 4pol. 5pol. 6h 9h 9h</p>	 <p>400V 50 u. 60 Hz</p> <p>3pol. 4pol. 5pol. 9h 6h 6h</p>	>50-500V 100-300 Hz rating" data-bbox="746 135 824 215"/> <p>&gt;50-500V 100-300 Hz</p> <p>3pol. 4pol. 5pol. 10h 10h 10h</p>	>50-500V 300-500 Hz rating" data-bbox="828 135 905 215"/> <p>&gt;50-500V 300-500 Hz</p> <p>3pol. 4pol. 5pol. 2h 2h 2h</p>
	<p><b>Prod.-ID.-No.</b> <b>EDP-No.</b></p>	<p>16A</p>	<p>3</p>	<p>201636 10870</p>				
	<p><b>Prod.-ID.-No.</b> <b>EDP-No.</b></p>	<p>16A</p>	<p>4</p>			<p>301646 11076</p>	<p>001646.10H 10543</p>	<p>001646.2H 10544</p>
	<p><b>Prod.-ID.-No.</b> <b>EDP-No.</b></p>	<p>16A</p>	<p>5</p>			<p>301656 11090</p>		
	<p><b>Prod.-ID.-No.</b> <b>EDP-No.</b></p>	<p>32A</p>	<p>4</p>			<p>303246 11132</p>		
	<p><b>Prod.-ID.-No.</b> <b>EDP-No.</b></p>	<p>32A</p>	<p>5</p>			<p>303256 11141</p>		
	<p><b>Prod.-ID.-No.</b> <b>EDP-No.</b></p>	<p>63A</p>	<p>4</p>			<p>306346 11188</p>		
	<p><b>Prod.-ID.-No.</b> <b>EDP-No.</b></p>	<p>63A</p>	<p>5</p>			<p>306356 11194</p>		
	<p>phase inverter</p>	<p><b>Prod.-ID.-No.</b> <b>EDP-No.</b></p>	<p>16A</p>	<p>5</p>		<p>3016562 11095</p>		
	<p>phase inverter</p>	<p><b>Prod.-ID.-No.</b> <b>EDP-No.</b></p>	<p>32A</p>	<p>5</p>		<p>3032562 11148</p>		

## Pin and socket connectors

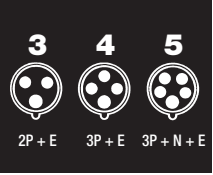






All-rubber CEE couplings with nickel-plated contacts  
Cable feeding via cable gland

 <p>3 4 5 2P + E 3P + E 3P + N + E</p>		Ampere	Number of poles	 <p>230V 50 u. 60 Hz 3pol. 4pol. 5pol. 6h 9h 9h</p>	 <p>400V 50 u. 60 Hz 3pol. 4pol. 5pol. 9h 6h 6h</p>	>50-500V 100-300 Hz label" data-bbox="746 136 825 214"/> <p>&gt;50-500V 100-300 Hz 3pol. 4pol. 5pol. 10h 10h 10h</p>	 <p>&gt;50-500V 300-500 Hz 3pol. 4pol. 5pol. 2h 2h 2h</p>
	<b>Prod.-ID.-No.</b> <b>EDP-No.</b>	16A	3	201637 10878			
	<b>Prod.-ID.-No.</b> <b>EDP-No.</b>	16A	4		301647 11078	001647.10H 10545	001647.2H 10546
	<b>Prod.-ID.-No.</b> <b>EDP-No.</b>	16A	5		301657 11098		
	<b>Prod.-ID.-No.</b> <b>EDP-No.</b>	32A	4	303247 11133			
	<b>Prod.-ID.-No.</b> <b>EDP-No.</b>	32A	5	303257 11151			
	<b>Prod.-ID.-No.</b> <b>EDP-No.</b>	63A	4	306347 11189			
	<b>Prod.-ID.-No.</b> <b>EDP-No.</b>	63A	5	306357 11196			



# Pin and socket connectors

## CEE appliance plug - plastic material

								
		Ampere	Polzahi		3pol. 4pol. 5pol. 6h 9h 9h	3pol. 4pol. 5pol. 9h 6h 6h	3pol. 4pol. 5pol. 7h 7h 7h	
<b>Angle entry appliance plug</b>  	Prod.-ID.-No. EDP.No.	16A	4				3016456.HM 11072	
	Prod.-ID.-No. EDP.No.	16A	5				3016556.HM 11086	
	Prod.-ID.-No. EDP.No.	32A	4				3032456.HM 11131	5032456.HM 39670
	Prod.-ID.-No. EDP.No.	32A	5				3032556.HM 11139	
<b>Angle entry wall appliance plug</b>  	Prod.-ID.-No. EDP.No.	16A	3	2016386.HY 46771				
	Prod.-ID.-No. EDP.No.	16A	4				3016486.HM 11081	
	Prod.-ID.-No. EDP.No.	16A	5				3016586.HM 11103	
	Prod.-ID.-No. EDP.No.	32A	4				3032486.HM 11135	
	Prod.-ID.-No. EDP.No.	32A	5				3032586.HM 11154	
	<b>Built-in appliance plug</b>  	Prod.-ID.-No. EDP.No.	16A	3	2016396 10891			
Prod.-ID.-No. EDP.No.		16A	4				3016496 11085	
Prod.-ID.-No. EDP.No.		16A	5				3016596 11118	
Prod.-ID.-No. EDP.No.		32A	3	2032396 10908				
Prod.-ID.-No. EDP.No.		32A	4				3032496 11138	5032496 17024
Prod.-ID.-No. EDP.No.		32A	5				3032596 11166	
	Prod.-ID.-No. EDP.No.	63A	4				3063496.HY.GERADE 48669	
	Prod.-ID.-No. EDP.No.	63A	5				3063596.HY.GERADE 46772	

Dimensions see page 11/8

# All-rubber reducers

**“Schuko, FI, LS”**  
 Explanations see page 1/0

The GIFAS reducers are manufactured according to ÖVE standard. They offer maximum safety to the user by the installation of fuses and earth leakage circuit breakers.

Simultaneous all-pole disconnecting and safe reconnecting is guaranteed.

Regulations for reducers and industrial connectors are to be found in ÖVE-EN 50250.

Equipment protective against overcharge must be installed in all places where the permissible permanent current  $I_z$  is being reduced if the protective equipment primarily installed cannot provide such protection.

**One-piece reducers with industrial connectors are not permitted. There must be a flexible cord between plug and socket with a minimum length of 800 mm in Austria and 1 m in Germany.**



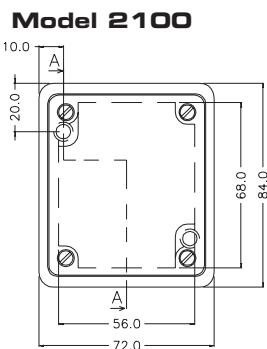
WxHxD: 72x84x61 mm

Feeding	Fitting	Fusing	EDP-No.	Product-ID-No.
2m Proflex cable 3x2,5sqmm with all-rubber CEE plug 5x16A 400V	1/Schuko socket 16A 230V		48378	21161.PA.2M.GG
2m Proflex cable 3x4,0sqmm with all-rubber CEE plug 5x32A 400V	1/Schuko socket 16A 230V	glass tube fuse 16A	48379	213201.PA.2M.GG

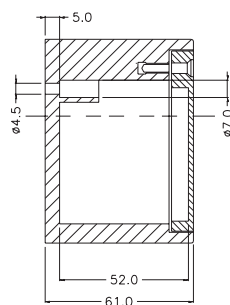


WxHxD: 160x280x133 mm  
 The safety material is installed under a shock-resistant transparent cover.

Feeding	Fitting	Fusing	EDP-No.	Product-ID-No.
2m Proflex cable 5x4,0 sqmm with all-rubber CEE plug 5x32A 400V	1/all-rubber CEE socket 5x16A 400V	1/LS-switch 3pol. 16A	77498	723219.2M.GG
2m Proflex cable 5x16,0sqmm with all-rubber CEE plug 5x63A 400V	1/all-rubber-CEE socket 5x16A 400V	1/LS-switch 3pol. 16A	77499	726319.2M.GG
2m Proflex cable 5x16,0sqmm with all-rubber CEE plug 5x63A 400V	1/all-rubber-CEE socket 5x32A 400V	1/LS-switch 3pol. 32A	77497	726339.2M.GG

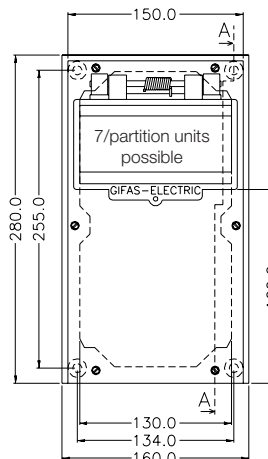


Front view  
 A-A

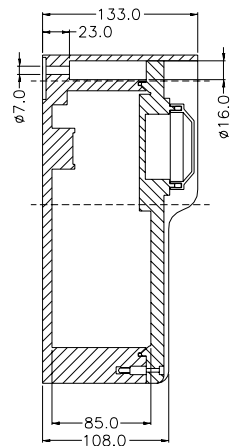


sectional view

## Model 7200



Front view



sectional view A-A



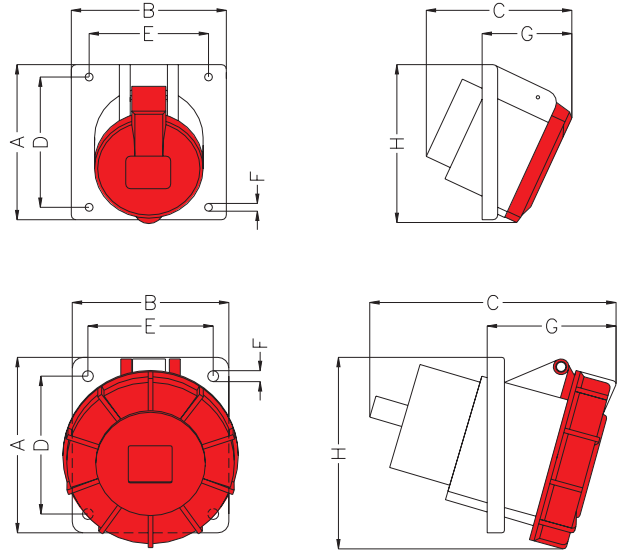
# Pin and socket connectors

## Dimension table - CEE built-in sockets and appliance plugs

Amp.	Volt	Number of poles	A	B	C	D	E	F	G	H
16A	24–42V	2P	75	64	80	60	52	5,5	60	83
16A	230–400V	3P	75	64	87	60	52	5,5	60	83
16A		5P	100	100	103	85	77	5,5	60	97
16A		5P*	100	82	103	85	59	5,5	60	97
16A		7P	100	100	121	85	77	5,5	70	107
16A		9P	100	100	121	85	77	5,5	70	107
32A	400V	4P	100	100	121	85	77	5,5	60	107
32A		5P	100	100	121	85	77	5,5	70	107
63A	400V	4P	112	100	144	88	80	7	80	119
63A		5P	112	100	144	88	80	7	80	119

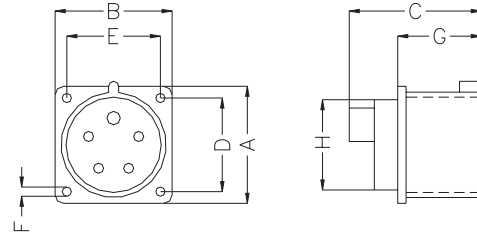
\* narrow flange design

### Built-in sockets



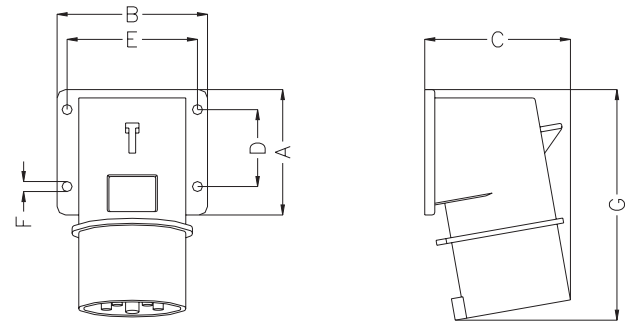
Amp.	Volt	Number of poles	A	B	C	D	E	F	G	H
16A	230–	3P	70	70	66	56	56	5,0	41	43
16A	400V	4P	70	70	66	56	56	5,0	41	43
16A		5P	70	70	68	56	56	5,0	42	55
32A	230–	3P	70	70	80	56	56	5,0	50	55
32A	500V	4P	70	70	80	56	56	5,0	50	55
32A		5P	70	70	80	56	56	5,0	50	55

### Built-in appliance plugs



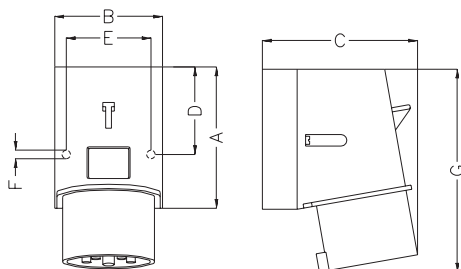
Amp.	Volt	Number of poles	A	B	C	D	E	F	G	H
16A	400V	4P	85	85	73	64	64	5,5	129	
16A		5P	85	85	77	64	64	5,5	129	
32A	400–	4P	75	90	85	45	78	5,5	137	
32A	500V	5P	75	90	88	45	78	5,5	138	

### Angle entry appliance plug



Volt	Amp.	Number of poles	A	B	C	D	E	F	G
230V	16A	3P	100	80	106	50	67	5	139
400V	16A	4P/5P	100	75	108	61	59	5	134
400V	32A	4P/5P	128	83	132	75	68	5	175

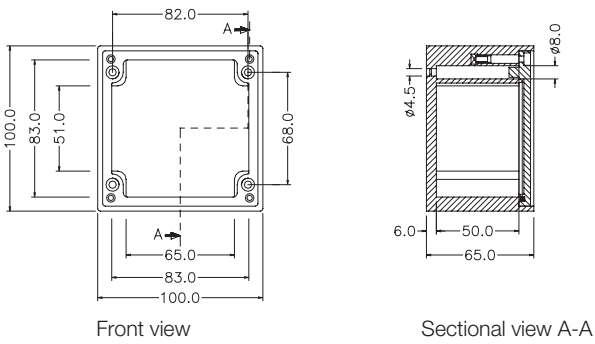
### Angle entry wall appliance plug



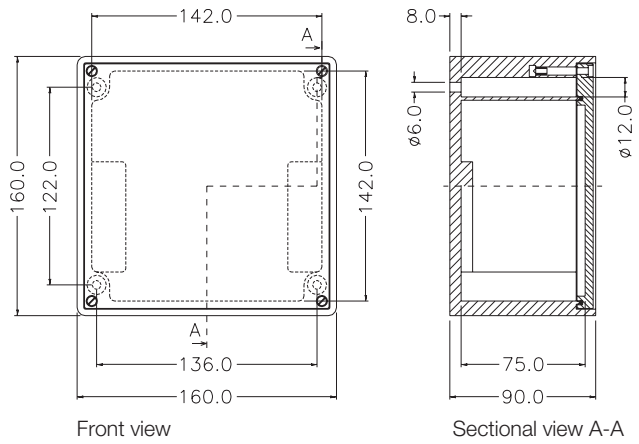
# Pin and socket connectors

## Dimensions table

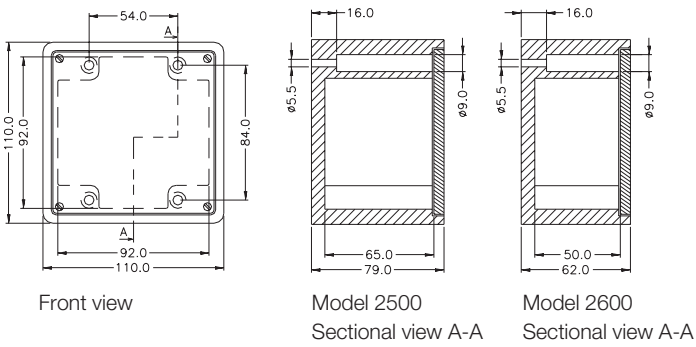
### Model 1010



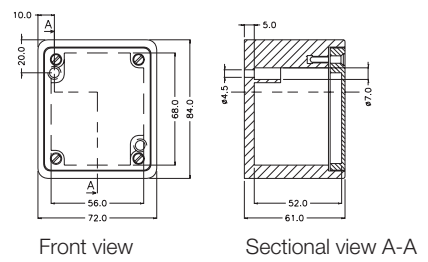
### Model 1616



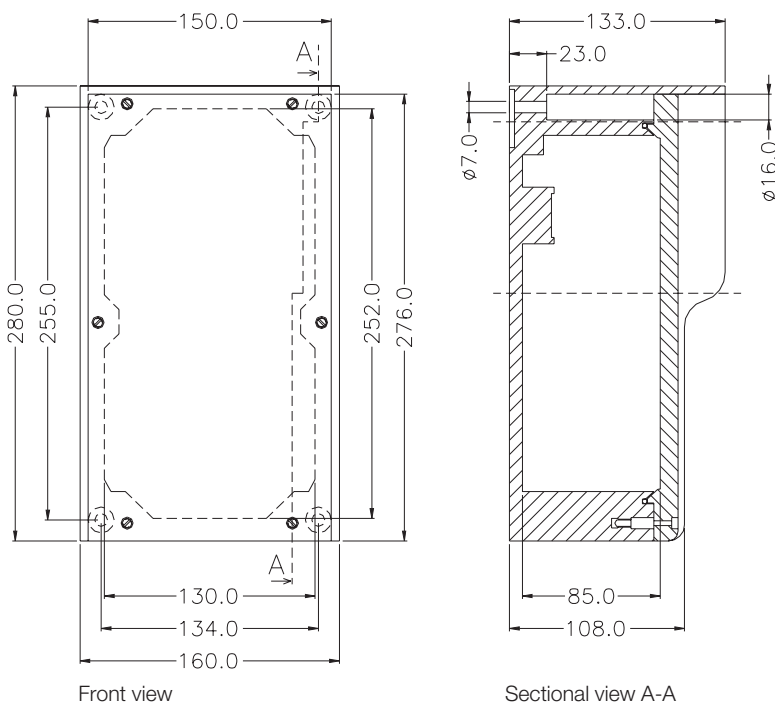
### Model 2500, 2600



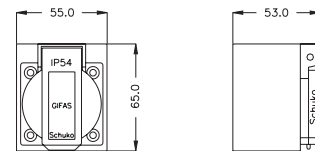
### Model 2100



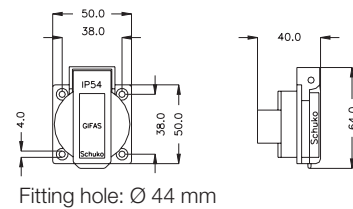
### Model 7250



### Model 308



### Model 309



### Model 309 IP68

