

GIFAS Cable bridges

Protect

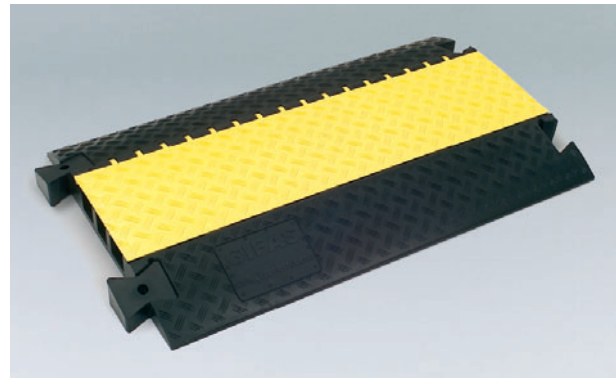


Protect your cable crossing sections with this new GIFAS cable bridge system and avoid accidents and damage. The ideal solution for electricity supply cords, gas-, water-, compressed air and hydraulic tubes and hoses. This new system provides order and safety for the short- and long time positioning of your cords and hoses. Made of Polyurethane, the surface with anti slip texture and the eye-catching yellow Polyethylene lid the GIFAS cable bridges containing 3 cable channels are suitable for daily use in in- and outdoor areas.

Every individual cable bridge can be connected with others by connecting plugs. Every cable bridge will be delivered with 2 of these plugs.

The hinged lid stands upright when the cords or hoses are inserted in the channels and can easily be closed via the integrated zip system afterwards.

The wide range of fittings turns these cable bridges into a flexible system with an excellent price/performance ratio.



The main assets at one glance:

- easy to install by a connecting system
- versatile in use
- endlessly extendable
- easy to retrofit
- warning colour: yellow – black
- reliable material Polyurethane
- unbreakable
- highly loadable
- abrasion proof
- non-slipping
- insulating
- temperature resistant
- weather resistant
- resistant against solvents, fuel, oil, defrosting agents
- longevity

GIFAS cable bridges to be used everywhere and for every purpose

- building sites
- streets
- boardwalks
- public areas
- entertainment districts
- fairgrounds
- showmen
- concert halls
- festivity- and sports grounds
- open-air events
- radio, film and television
- studios
- production facilities
- company areas
- airports
- ports
- emergency operations
- military purposes.

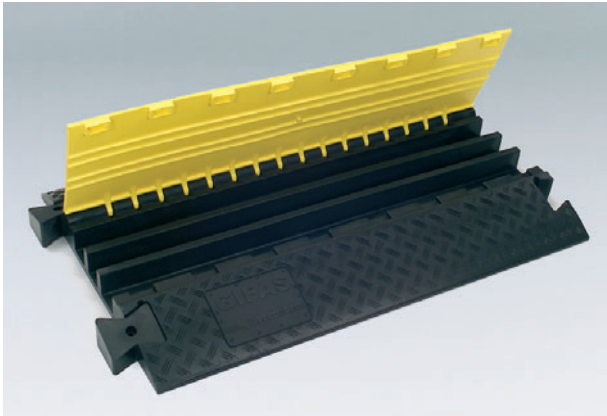
Further variations of cable- and hose bridges on request.



GIFAS-ELECTRIC

GIFAS-Cable bridges

Protect

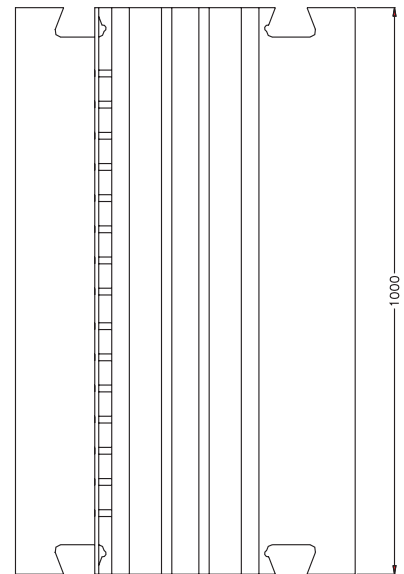


Technical data

material of base:	Polyurethane (black)
material of lid:	Polyethylene (warning colour: yellow)
cable channels:	
- number:	3 channels
- width:	53 / 46 / 58 mm
- height:	50 mm
dimensions L x W x H	1000 x 600 x 75 mm
weight:	19 kg
loading pressure:	5 t/400 cm²
fire resistance:	acc. to DIN 4102-B2
accessories:	1 pair connecting plugs

It is so easy...

... to put the elements together. Easy and fast. You assemble a perfect cable bridge without any effort and within the shortest time possible. You already save money during installation. But especially you will save money in the application. Your cables or hoses will live many times longer with this professional protection. No slipping! No squeezing! No chafing! Clean insulation channels keep your cables and hoses as good as new. An investment that pays off within short!

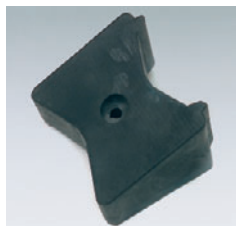


EDP-No.	Prod. ID-No.	Length in mm	Width in mm	Height in mm
67898	KABELBRÜCKE.1000.600.75.GIFAS	1000	600	75

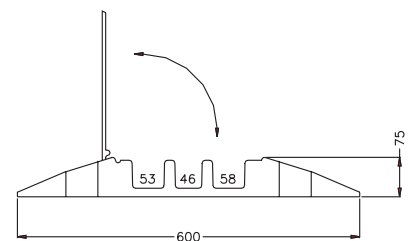
Accessories



End ramp with cable outlet
– reducing hazard of tripping



connecting plugs
(1 pair as spare part)

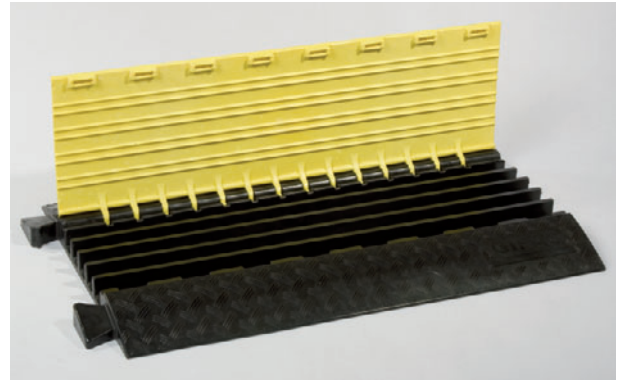
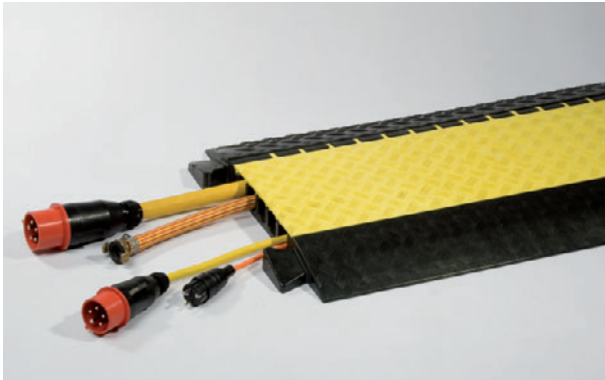


EDP-No.	Prod. ID-No.	Dimensions in mm	Weight in kg
67899	KABELBRÜCKE.ENDSTÜCK.GIFAS	150 x 600 x 75	2,6
67940	KABELBRÜCKE.VERBINDUNGSZAPFEN.GIFAS.1P		

Further variations of cable- and hose bridges on request.

GIFAS Cable bridges

Midi



Technical data

- material of base: Polyurethane (black)
- material of lid: Polyethylene (yellow-orange)
- integrated connecting plugs
- 5 channels
- loading pressure: 5t/400 cm²

dimensions:

- length: approx. 880 mm
- width: approx. 540 mm
- height: approx. 55 mm

weight:

approx. 12 kg

5 channels:

- width: approx. 35 mm
- height: approx. 36 mm

Product assets:

- easy to install by connecting system
- unbreakable
- insulating
- non-slipping
- temperature resistant: -40°C to +70°C
- weather resistant
- longevity
- resistant against solvents, fuel, oil and defrosting agents

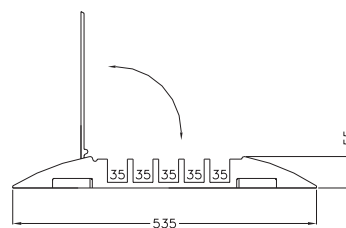
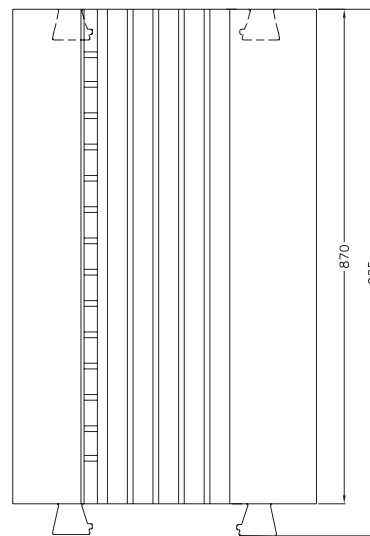
Single module with reliable plastic shutting system!

EDP-No.

Prod. ID-No.

72205

KABELBRÜCKE.880.540.55.GIFAS

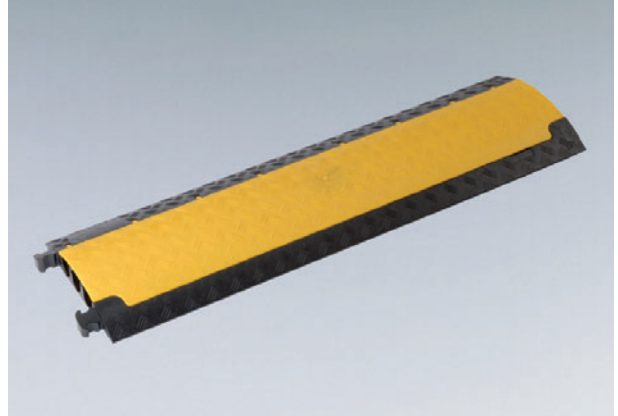
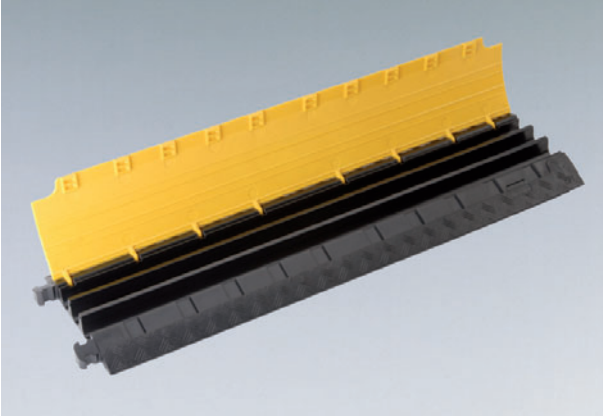


Further variations of cable- and hose bridges on request.



GIFAS Cable bridges

Protect Mini



The small among the big ones. Light weight, for professional and general use. This cable bridge meets all expectations of cable protection.

It is compact, very light (only 5 kg!) but still withstanding the passing of vehicles. Coloured in the familiar black/yellow safety design.

Equipped with 3 insulating channels of 35 mm diameter and a total height of 48 mm, this bridge will mainly be used indoor, but the rating of 2 tons also allows car traffic without problems.

The bottom of the bridge is equipped with an anti-slip surface, providing optimum grip on most grounds.

The PROTECT MINI is resistant against oil, acids and fuel. It is equipped with self-cleaning hinges.

Technical Data

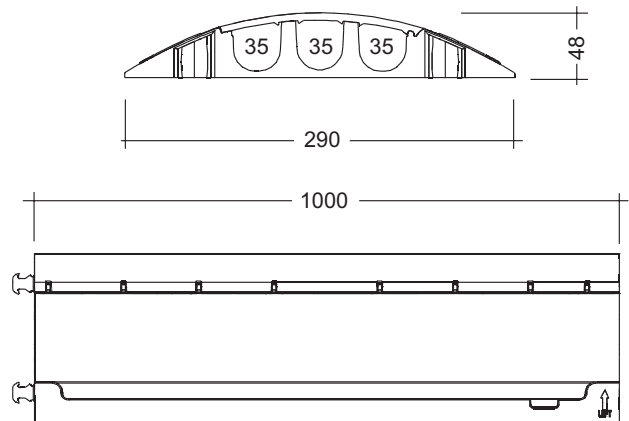
material:	Polyurethane
length:	1000 mm
width:	290 mm
total height:	48 mm
cable channels:	3
width of channels:	35 mm
rating:	approx. 2 t/400 cm ²
weight:	approx. 5 kg

EPD-No.

86042

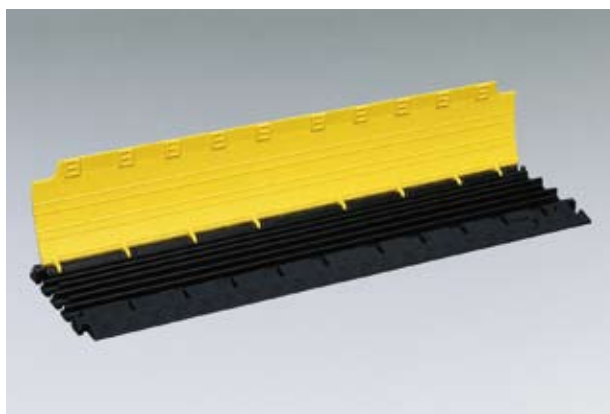
Prod.ID-No.

KABELBRÜCKE.1000.290.48.GIFAS



Further versions of cable- and hose bridges on request.

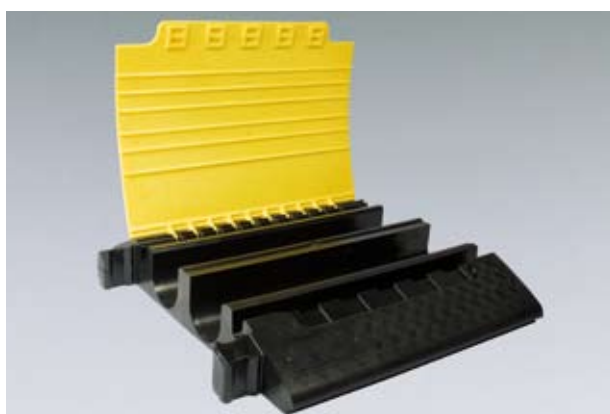
GIFAS cable bridges and hose bridges



Cable bridge MICRO

L x W x H:	1000 x 280 x 32 mm
channels:	6
width of channels:	17 mm
loading pressure:	up to 2 t / 400 cm ²
weight:	approx. 4,4 kg

EDP-No.	Product-ID-No.
89207	KABELBRÜCKE.1000.280.32.MICRO



Cable bridge MEGA

L x W x H:	700 x 780 x 140 mm
channels:	4
width:	2 x 120 mm, 2 x 35 mm
height:	50/115/115/50 mm
loading pressure:	up to 6 t / 400 cm ²
weight:	approx. 30,5 kg

EDP-No.	Product-ID-No.
81902	KABELBRÜCKE.750.700.145.MEGA



Cable bridge JUNIOR

L x W x H:	1000 x 250 x 34 mm
channels:	3
width:	17 / 23 / 17 mm
height:	24 mm
loading pressure:	up to 680 kg / 400 cm ²
weight:	approx. 2,4 kg

EDP-No.	Product-ID-No.
61677	KABELBRÜCKE.1000.250.3.JUNIOR

GIFAS cable bridges and hose bridges



Cable bridge MINI

L x W x H:	800 x 435 x 37 mm
channels:	7
width:	30 mm
height:	bis 30 mm
loading:	pedestrians & bicycles
weight:	approx. 3,5 kg

EDP-No.	Product-ID-No.
72948	KABELBRÜCKE.800.435.40.MINI



Cable bridge SUBTERRA

L x W x H:	760 x 570 x 150 mm
channel:	1
width:	113 mm
height:	100 mm
loading pressure:	up to 9 t / 400 cm ²
weight:	approx. 14 kg

EDP-No.	Product-ID-No.
84237	KABELBRÜCKE.760.570.150.SUBTERRA



Hose brige

L x W x H:	860 x 300 x 90 mm
channels:	2
	For fire brigades for laying out B and C hoses.
angle of gradient:	approx. 15°
execution:	similar DIN 14820
temperature zone:	-20°C up to + 70°C
max. loading pressure:	40 t
weight:	approx. 11 kg

EDP-No.	Product-ID-No.
84066	SCHLAUCHBRÜCKE.860X300X90.40T